

DESCRIPTION

DREW Sample Stations are pre-piped assemblies used to simplify the conditioning of steam or boiler water for safe and effective sample collection required for accurate testing. The DREW Sample Station includes a sample cooler with isolation valves for the sample and coolant sides, sample pressure reducer to control the outlet temperature, a thermometer, and a sink. It is designed to be a stand-alone test station, separate from other sinks or cleaning basins located in the engine room. Coupled with a Water Treatment Test Cabinet (PCN 1AA0016), it provides a safe, clean, and efficient boiler water test environment.

No boiler water treatment program is complete without effective sample cooling. There are two reasons: one is for safe handling while taking the sample. The second is for representative samples required for accurate test results.

The DREW Sample Cooler incorporated with the Sample Station is the most efficient and cost effective sample cooler available. The double helical coil design more than doubles the heat exchange surface area of the typical boiler water sample cooler. This enables safer and less timely sample collection. In addition, the cooler can be dismantled for cleaning to maintain the optimal heat transfer rate.

DREW LP and HP sample stations (PCN 1AA9111 and PCN 1AA9112) utilize the DREW TLF-4225 Sample Cooler. It is a stainless steel tube and shell construction. Use distilled or potable water or an existing fresh water cooling water circuit to provide the cooling medium. For coolants with chloride levels >250 ppm or if sea water is the only option, contact your local Drew Marine representative for other alternatives.

SPECIFICATIONS

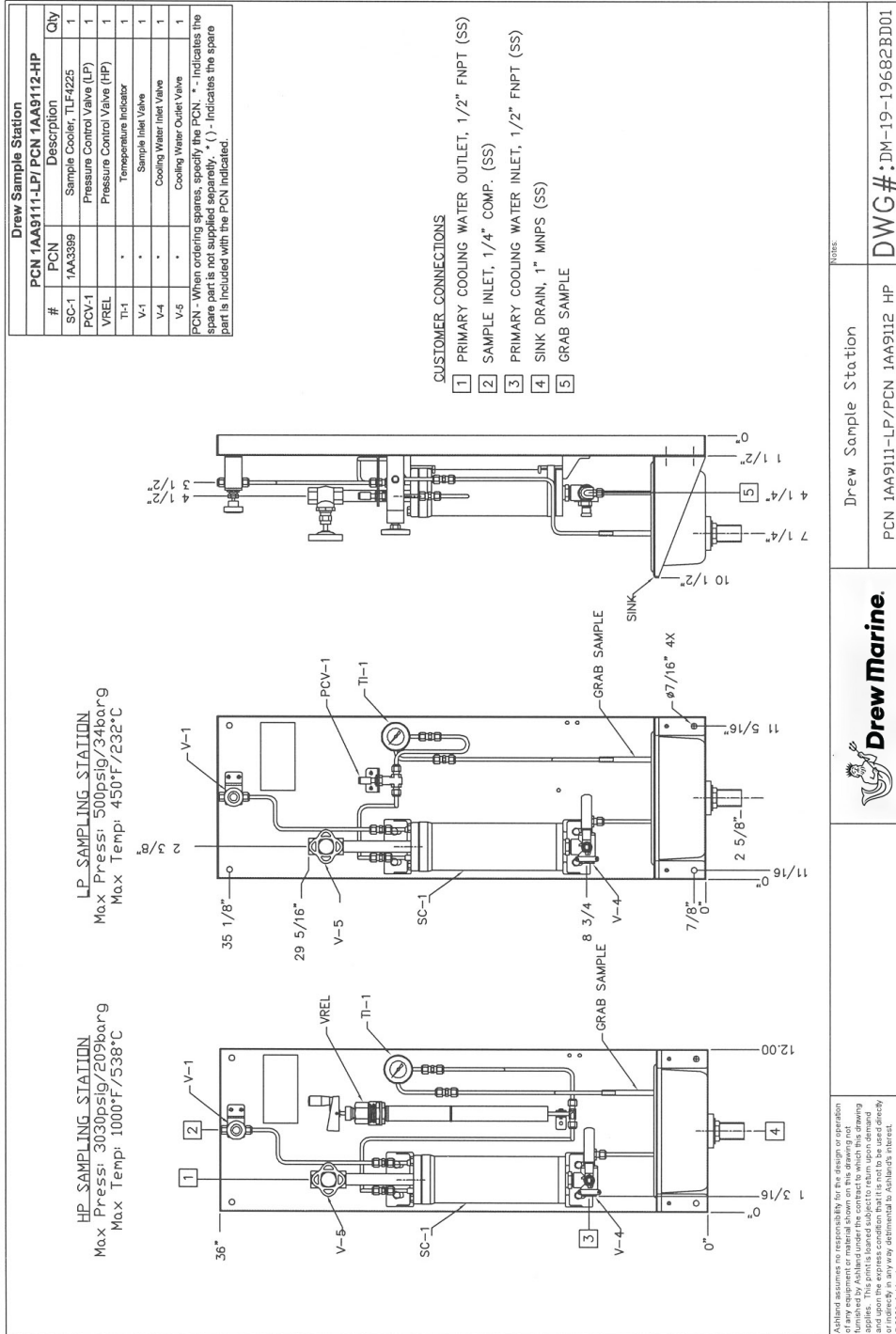
Tube, Pressure Rating:	345 bar @ 538°C
Shell, Pressure Rating:	31 bar @ 343°C
Heat Exchange Area:	0.22m ² (2.4ft ²)
Pressure Reducer (LP), max:	34 bar @ 232°C
Pressure Reducer (HP), max:	209 bar @ 538°C



PCN 1AA9111 (LP) - up to 34 bar (shown)
PCN 1AA9112 (HP) - up to 209 bar

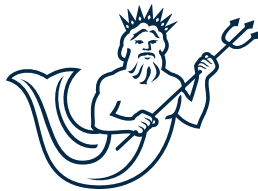


Contact your Drew Marine representative for more information



▶ **Contact your Drew Marine representative for more information**

Drew Marine maintains Safety Data Sheets on all of its products. These documents contain health and safety information for the development of appropriate product handling procedures to protect your employees. Safety Data Sheets should be read and understood by all of your supervisory personnel and employees before using Drew Marine products.



Drew Marine®

**100 South Jefferson Road
Whippany, NJ 07981 USA
1-973-526-5700
Drew-Marine.com**

Copyright © Drew Marine. All Rights Reserved. All statements, information and data presented herein are believed to be accurate and reliable but are not to be taken as a guarantee, express warranty or implied warranty of merchantability or fitness for a particular purpose, or representation, express or implied, for which seller assumes legal responsibility, and they are offered solely for your consideration, investigation and verification. Statements or suggestions concerning possible use of this product are made without representation or warranty that any such use is free of patent infringement and are not recommendations to infringe on any patent.