

DREW™ AIR DIAPHRAGM PUMP SYSTEM



DESCRIPTION

The DREW Air Diaphragm Pump System is a pneumatic driven diaphragm pump and tank set. It is suitable for circulating and transferring various marine products.

The unit is suitable for introducing cleaning products from the smallest heat exchanger to the largest diesel jacket system, propulsion boiler, or tank. The system may also be used for circulating cleaning solutions through evaporators and small heat exchangers or for stripping tanks and bilges. The 3-way suction valve design allows for system circulation without the risk of tank overflow or it can be externally piped to provide system return to the tank.

The unit is rugged and requires little maintenance.

APPLICATIONS

Evaporator Treatment Program

- SAF-ACID™ descaling compound
- DESCALE-IT™ liquid acid descaler
- TC#4™ tank cleaner
- HDE-777™ heavy-duty emulsifier
- CARBON REMOVER™ solvent cleaner
- ENVIROMATE® 2000 general-purpose cleaner
- AMEROID® RSR rust stain remover
- ACC-9™ air cooler cleaner
- FERROCLEAN® cleaning treatment
- O&GR™ oil and grease remover
- AMEROID OWS quick separating degreaser
- EDGE® heavy-duty cleaner
- LAC™ liquid alkaline cleaner
- DREWCLEAN® 2000 quick-breaking degreaser
- SNC™ 2000 carbon remover



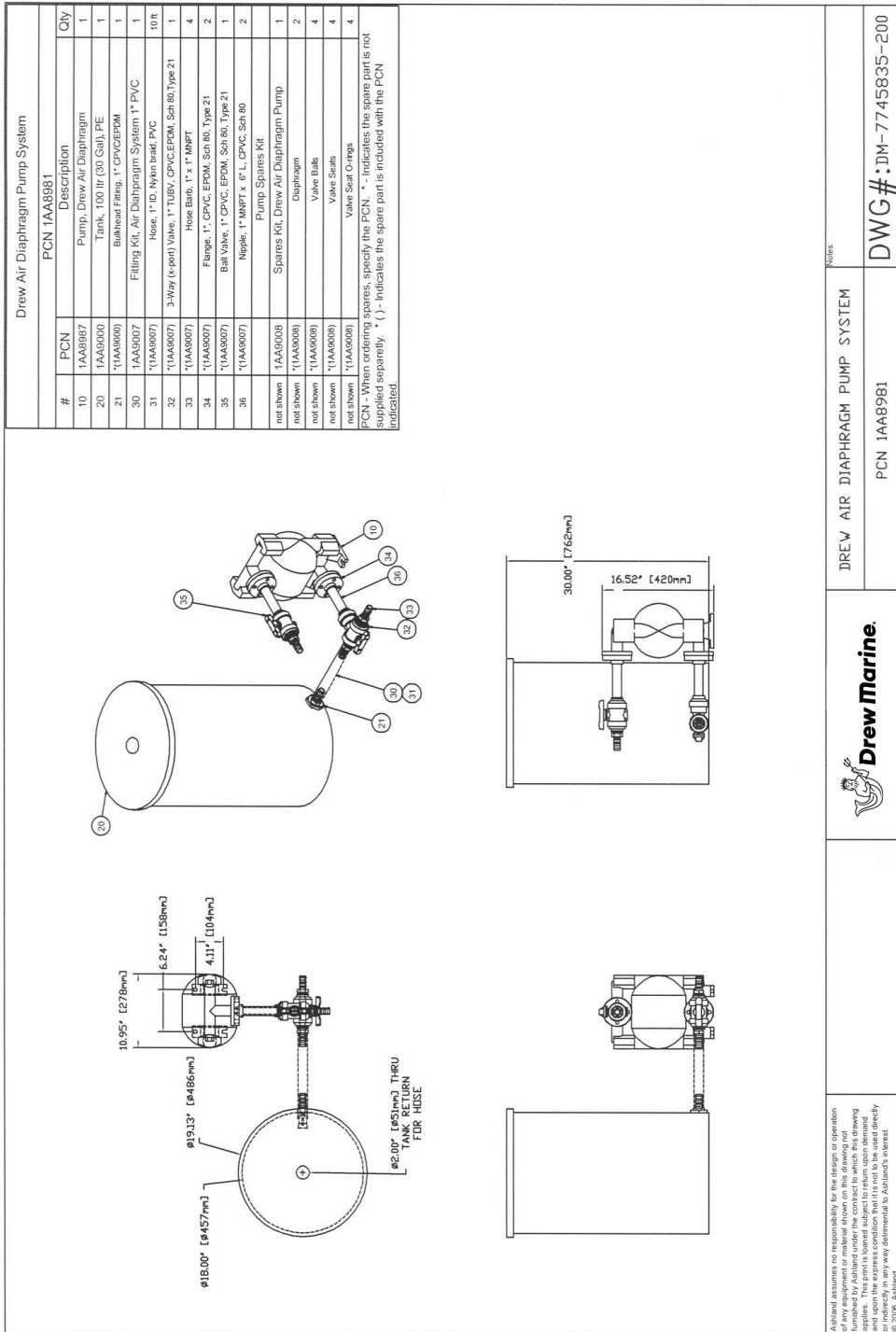
DREW Air Diaphragm Pump System (PCN 1AA8981)

SPECIFICATIONS

Air Pressure Required:	1.3-7 bar (20 psi-100 psi)
Air Consumption:	0.1-85 M ³ /hr (0.1-50 Ft ³ /min)
Max Flow Rate:	7.9 M ³ /hr (35 GPM)
Max Discharge Press:	6.9 bar (100 psi)
Max Suct Lift:	6.1 mtr (20 ft)
Tank Capacity:	100 ltr (26 gal)



Contact your Drew Marine representative for more information



Ashtand assumes no responsibility for the design or operation of any equipment or system which may be used in connection with the equipment or system described in this drawing. This print is loaned subject to return upon demand and is not to be reproduced, copied, or used in any way without the express written consent of Ashland. Ashland is not responsible for any alterations to Ashland's interest. © 2006, Ashland



DREW AIR DIAPHRAGM PUMP SYSTEM
PCN 1AA8981

DWG#: DM-7745835-200

▶ **Contact your Drew Marine representative for more information**

Drew Marine maintains Safety Data Sheets on all of its products. These documents contain health and safety information for the development of appropriate product handling procedures to protect your employees. Safety Data Sheets should be read and understood by all of your supervisory personnel and employees before using Drew Marine products.



Drew Marine®

**100 South Jefferson Road
Whippany, NJ 07981 USA
1-973-526-5700
Drew-Marine.com**

Copyright © Drew Marine. All Rights Reserved. All statements, information and data presented herein are believed to be accurate and reliable but are not to be taken as a guarantee, express warranty or implied warranty of merchantability or fitness for a particular purpose, or representation, express or implied, for which seller assumes legal responsibility, and they are offered solely for your consideration, investigation and verification. Statements or suggestions concerning possible use of this product are made without representation or warranty that any such use is free of patent infringement and are not recommendations to infringe on any patent.