

## DESCRIPTION

HOLD BARRIER XR (EXTRA RESISTANCE) is an environmentally friendly and non-pollutant material. It is used as protective coating by creating a neutral layer between the bulk cargo and the metal surface. It prevents cargo residues' penetration into the surfaces pores and minimizes the requested volume of cleaning detergent used to clean after cargo unloading.

## APPLICATION & USE

HOLD BARRIER XR is a ready-to-use product, more concentrated than the regular one, and it creates a thicker layer for the enhanced protection against corrosive cargoes like sulfur and salt. HOLD BARRIER XR is ready-to-use and does not need to be diluted with water prior to the application.

It should be applied on clean surfaces without any cargo residues or stains. It is highly recommended that the chemical is applied with appropriate equipment, such as CARGO HOLD APPLICATION SET, which is suitable to use for such materials.

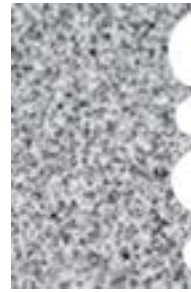
Apply the product using low pressure spraying, with the wide angle nozzle, make sure that all of the areas are covered, and there has been no overlapping. Each liter of the ready-to-use product can cover approximately 8-15 m<sup>2</sup>.

Make sure that the surfaces are left to dry for 24-48 hours depending on the environment conditions. The surfaces **MUST BE COMPLETELY DRY BEFORE LOADING THE NEXT CARGO**.

In order to clean the surfaces after unloading, use large quantities of water under pressure. No special cleaning detergents are required to remove HOLD BARRIER XR. It will be easily removed along with the cargo residues after the next cleaning.

Due to its transparency, it is possible that some areas will be left unprotected, with no product applied. For those areas a cleaning detergent will be necessary to remove residues of the loaded cargo that have penetrated into the coating's pores.

CARGO HOLD BULKHEAD



Micro-pores have a different absorption mechanism than large pores. Thus micro-pores allow various cargoes to penetrate exposed surfaces of a vessel rendering hold cleaning difficult.



HOLD BARRIER fills in the micro-pores, forming a thin layer that prevents cargo penetration and adhesion.

Keep your bulkheads "grain clean" with less time and effort.

## TYPICAL PHYSICAL PROPERTIES

Appearance:	Opaque liquid
Odor:	Odorless
pH (neat):	7.0 ± 1.0
Flash Point (PMCC):	None
Density at 20°C:	1.01 ± 0.03 g/cm <sup>3</sup>
Solubility:	Soluble in water
Compatibility: (Concentrated)	Metal, Coatings, & Rubber: No known effect

**NOTE:** Always wear the appropriate personal protective equipment when using this product.

## PACKAGING

HOLD BARRIER XR is available in 210 liter drums (PCN 9930018).

## FEATURES

- Creates a thick layer for corrosive cargoes (sulfur, salt)
- Ready-to-use
- Environmental friendly

## BENEFITS

- Long Shelf-life
- Prediluted / does not need dilution
- No detergent is required to be removed
- Not harmful to the marine environment



Contact your Drew Marine representative for more information

## IMPORTANT INFORMATION

Drew Marine maintains Safety Data Sheets on all of its products. Safety Data Sheets contain health and safety information for your development of appropriate product handling procedures to protect your employees.

Our Safety Data Sheets should be read and understood by all of your supervisory personnel and employees before using Drew Marine products.



# Drew Marine.

400 Captain Neville Dr.  
Waterbury, CT 06705 USA  
1-973-526-5700  
[Drew-Marine.com](http://Drew-Marine.com)