



Drew Marine

**Solutions for
Cargo Hold Cleaning**



Grain Clean

Hospital Clean

To increase efficiency and cargo product quality, find the right solutions with Drew Marine.

Maintaining cargo hold cleanliness is crucial for vessel upkeep and preserving the quality of your customers' goods. Failure to properly maintain these areas poses risks, such as cargo cross-contamination, costly survey failures, certificate delays, and port state penalties. Additionally, the idle time caused by a dirty vessel translates into financial losses.

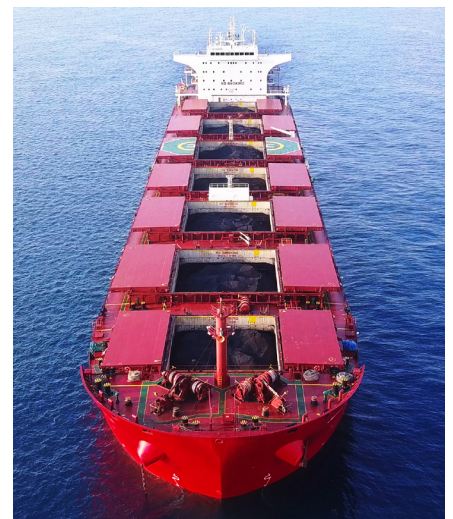
At Drew Marine, we understand these challenges and have developed innovative cleaning solutions to address them effectively. For almost a century, we have been supplying specialty chemicals to the marine industry. With a track record of proven performance, our cargo hold cleaning solutions offer time savings, expedited ship turnarounds, and ultimate peace of mind.

When you need your vessel to leave port faster while ensuring the highest level of cargo integrity for your customers, rely on the expertise of Drew Marine as your chemical supplier.

Our team at Drew Marine consists of experienced professionals who understand the specific needs of cargo hold cleaning. We leverage advanced technologies and industry expertise to provide customized solutions that optimize cleanliness, minimize downtime, and enhance operational efficiency.

Our unwavering commitment to excellence and innovative solutions will ensure that your cargo holds are maintained to the highest standards, enabling smooth operations and the preservation of cargo quality.

Choose Drew Marine for reliable, efficient, and effective cargo hold cleaning solutions. Our proven track record, extensive experience, and dedicated team make us the ideal partner to help you achieve optimal cleanliness and operational success.



The Right Time-Savers

Cleaning Standards

The strict 'grain clean' and 'hospital clean' standards demand the elimination of foreign particles, such as loose paint and rust, on the surfaces of the cargo hold.

Cleaning Machines

Our DREWJET series of high-pressure cleaning machines effortlessly ensure optimal surface cleanliness, preparing cargo hold surfaces with ease.

Protective Solutions

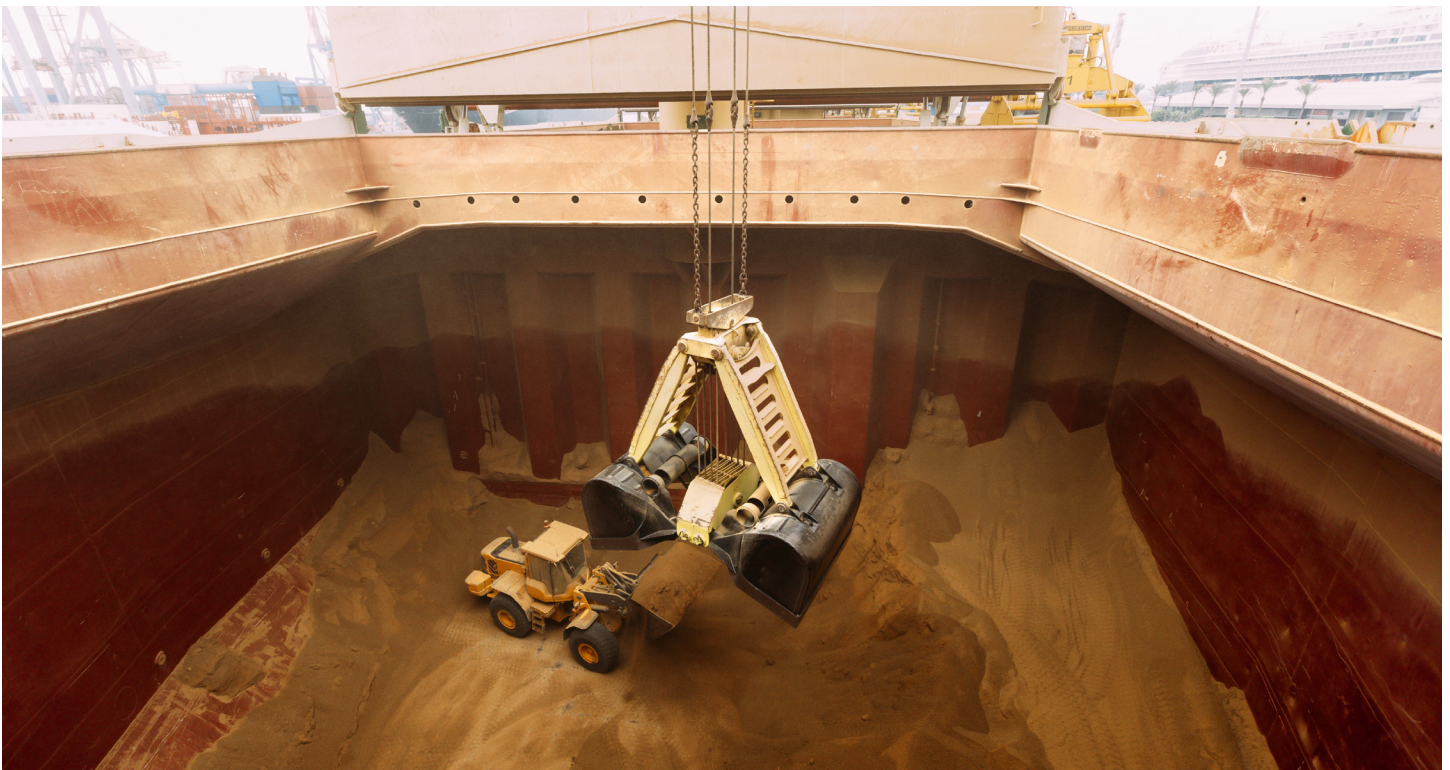
Solutions like our Rust Remover Plus improve de-rusting and passivation on tank-top areas, and temporary protective coatings like the Hold Barrier series efficiently protect surfaces against corrosion and cargo penetration.

Application Sets

Our cargo hold chemical application sets are the ideal solution for low pressure chemical application on hard-to-reach areas of the cargo hold. The applicators in the sets are durable, telescopic, have a long reach, and are compatible with a wide range of chemical products – able to apply alkaline and acidic formulations.



Rely on Drew Marine for innovative solutions that optimize the time and cost related to cargo hold cleaning.



The Right Products

Drew Marine brings you a variety of formulated, water-soluble chemical products – specifically designed to provide quick, high-performance in low concentrations, while protecting your crew, the cargo, and the environment. These products are MARPOL Annex V compliant.

HOLDBRITE XF

Heavy duty multi-purpose alkaline cleaner with a legacy for its effectiveness in coal and pet coke cleaning.

NICKEL ORE REMOVER

Our specially-designed alkaline solution – consisting of highly-effective surfactants that react with nickel ore residues and remove them with less effort.

CEMENT REMOVER SUPER

A specialized acidic solution for cleaning cement/cement clinker cargo residues from the cargo hold and surrounding areas.

LIME OUT

A highly-effective, specialized acidic solution for cleaning limewash protective coating residues.

HOLD BARRIER Brand Products

Innovative, temporary protective coating solutions used to protect the cargo holds against corrosive cargoes, and to optimize usage of detergent chemistry. Also provided in concentrated form for storage space saving and economy of scale.

RUST REMOVER PLUS

A heavy duty acidic solution that removes rust and passivates surfaces. Ideal for tank top and vertical surfaces.



The Right Equipment

APPLICATION SETS

The ideal solution for applying temporary protective coatings and chemical cleaners. Available in three versions: 36, 42 and 57ft telescopic lances accompanied by diaphragm pump of one inch and 150LPM of capacity. All are compatible with wide range of chemical products.



DREWJET 500 III

The flagship of the DREWJET series. Powerful high pressure washing machine, versatile for maintenance cleaning, removal of loose paint and rust, hydro-blasting resistant, tenacious cargo residues cleaning. Highly recommended for solidified cement cargo removal. Rugged and suitable for the difficult marine environment.



DREWJET 350 II

Highly-productive, high pressure washing machine with 20LPM of working flow at 350bar of pressure. Versatile for maintenance and cargo hold spot cleaning.



DREWJET 250 II

Flexible and effective for high pressure washing up to 250bar. Suitable for maintenance cleaning in the cargo holds, deck, and engine room areas.



ELECTRIC SUBMERSIBLE PUMP KIT

Delivered in one box: A high capacity, electric operated submersible pump kit, specially designed for pumping rinse water after cement and cement clinker cargo cleaning, where the use of the bilge pump is not an option.



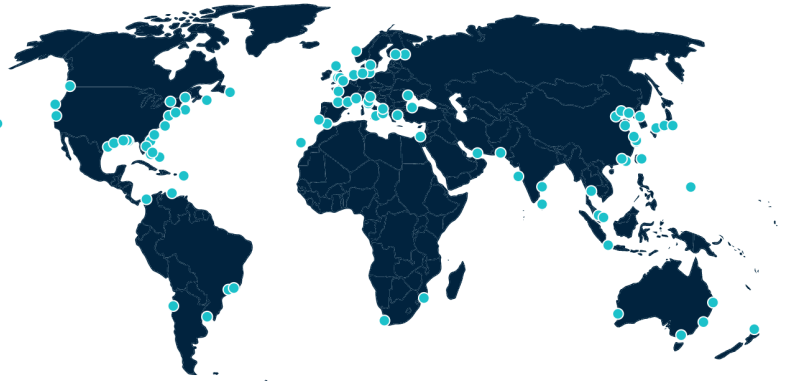
HYDROJET HOLD CLEANING GUN

Fire hydrant system and compressed air enables this hold cleaning gun to rinse surfaces with 7bar of pressure up to a 35m reach. Effective, versatile and designed with tripod and platform for use by one operator.



The Right Support

For nearly a century, Drew Marine has been dedicated to delivering peace of mind to our valued customers. You can count on total support from the creation of new products, to onboard assistance from expert maritime professionals, like our Technical Service Team, to a global logistics network like no other. Drew Marine supports our business partners like nobody else in the industry.



900+

Ports Serviced Worldwide

60

Global Warehouses

3

Production Facilities



The Right Portfolio

Drew Marine is your single source for cargo hold cleaning solutions. For more information, contact your Drew representative today.

Cargo Hold Cleaning Chemistry	Description	PCN
HOLDBRITE XF	Multipurpose, high foaming, alkaline product for carbon-like cargoes	9875016
CEMENT REMOVER SUPER	Heavy Duty, Acidic for Cement and Cement Clinker cargo cleaning	9877012
LIME OUT	Heavy Duty, Acidic for Lime wash and Lime Stone cargo cleaning	9893018
NICKEL ORE REMOVER	Special alkaline for nickel ore cargo cleaning	0110209
RUST REMOVER PLUS	Heavy Duty, Acidic for de-rusting and passivation on the cargo hold surfaces	9880015

Temporary Protective Coatings	Description	PCN
HOLD BARRIER	Multipurpose Temporary Protective Coating	9928013
HOLD BARRIER XR	Special Temporary Protective Coating, Extra Resistance for Corrosive cargoes like Salt and Sulphur	9930018
HOLD BARRIER CONCENTRATE	Temporary protective coating in concentrate form, dilution on board ad hoc	9929011

Cleaning Equipment	Description	PCN
APPLICATION LANCE 57	High Range Telescopic Chemical Application Lance - Up to 57ft	0160109
APPLICATION LANCE 42	Medium Range Telescopic Chemical Application Lance - Up to 42ft	0160108
APPLICATION LANCE 36	Low Range Telescopic Chemical Application Lance - Up to 36ft	0160107
CARGO HOLD APPLICATION SET L	1' Inch Chemical Resistant Diaphragm Pump Set with accessories	0160135
DREWJET 500 III	Hydroblasting, De-rusting, Maintenance cleaning, Cargo Hold Spot Cleaning	9803017
DREWJET 350 II	Maintenance cleaning, Cargo Hold Spot Cleaning	9802019
DREWJET 250 II	Maintenance cleaning, Cargo Hold Spot Cleaning, Engine Room Cleaning	9801011
ELECTRIC SUBMERSIBLE PUMP KIT	High capacity water pump for cargo holds, bilges and ballast tanks.	0200607
HYDROJET HOLD CLEANING GUN	Surface rinsing using the fire hydrant system	0160118

OUR VISION

Drew Marine is the most trusted brand and preferred global resource for marine solutions that enhance the longevity and operating efficiency of ocean vessels.

OUR MISSION

To sustain the superiority of the Drew Marine brand by bringing environmentally and technologically superior products and services for the benefit of vessel owners and operators while increasing shareholder value.



Drew Marine[®]

400 Captain Neville Drive
Waterbury, CT 06705 USA
1-973-526-5700
www.Drew-Marine.com